

What Goes Where

Your guide to rubbish and recycling in County Durham



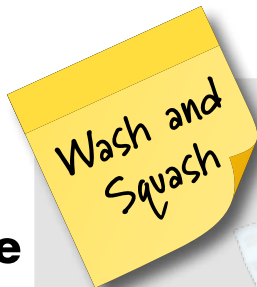
Which bin do
you put it in?

 recycle
for County Durham





Yes please



Paper and cardboard



Cartons, cans, aerosols and foil



Plastic pots, tubs, trays and bottles



Recycle glass bottles and jars in your kerbside box



Yes please



Bag your rubbish before placing it in this bin. This includes:

Food waste

Nappies

Pet waste

Polystyrene

Crisp packets

Please help us to bring down contamination levels in County Durham by doing your bit to recycle properly. If you're in doubt as to whether an item can be recycled, it's best to leave it out of your recycling bin and place it in your rubbish bin.

- All recyclable items should be washed and squashed and placed loose in your recycling bin.
- Please do not put carrier bags or black bin liners in your recycling bin as these clog up our machinery.
- Leave lids on bottles but remove pumps and labels where possible.



- All glass bottles and jars should be placed in your green box (no broken glass or pyrex).
- Please put your box out for collection even if this isn't full, this makes it easier for the crews to lift them.

Please don't place textiles, duvets or pillows in your recycling bin, these can be taken to one of our household waste recycling centres www.durham.gov.uk/hwrc or donated to charity if in good condition.

Batteries should not go in your recycling bin or rubbish bin, they should be taken to a battery recycling point, located at one of our many small electrical recycling points across County Durham.



Small, broken electrical items (small enough to fit in a carrier bag) should be taken to one of our many small electrical recycling points across County Durham



www.durham.gov.uk/weee

All bins should be placed at the kerbside for 7am on your collection day and brought back onto your property by 6pm the same day. If you forget to place your bin/box out for collection then you will need to wait until your next collection date. Please do not tie your bin to a fence or tie your lid shut as this may prevent your bin from being emptied.

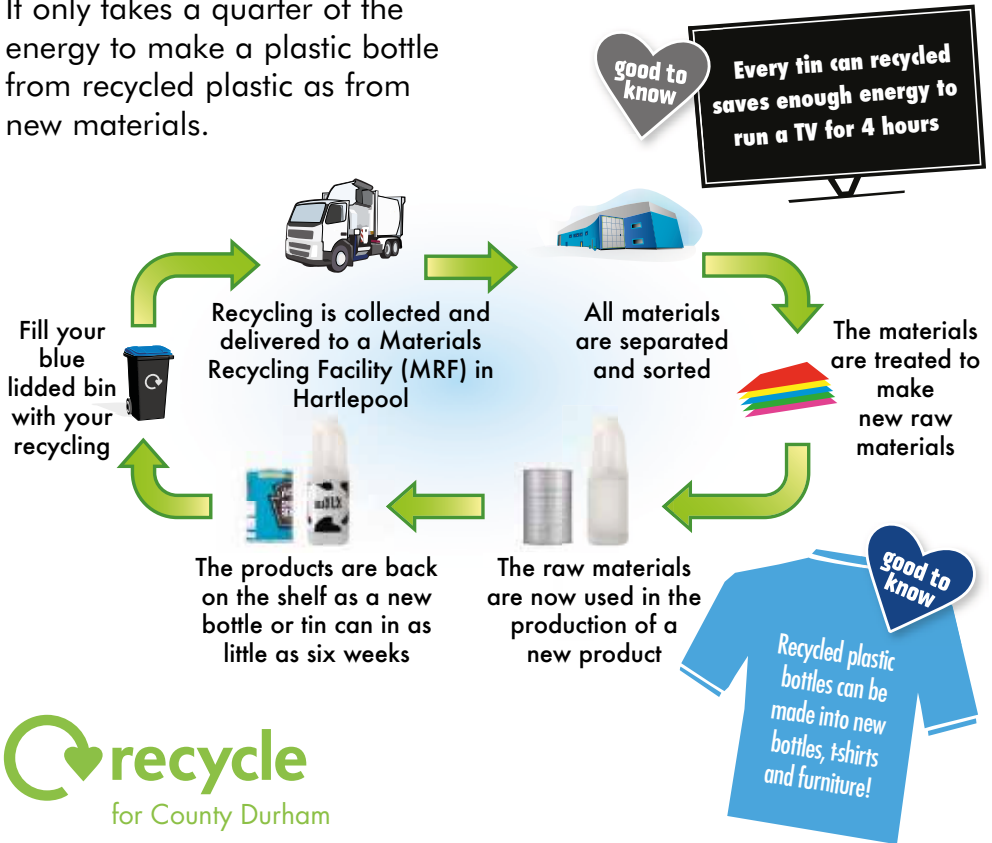
Find your collection day at www.durham.gov.uk/MyDurham

A bulky waste collection can be booked for larger items see www.durham.gov.uk/bulkywaste There is a charge for this service.

Why does recycling matter?

For every item we recycle, we are reducing the need to use raw materials, which helps save energy and precious resources. It only takes a quarter of the energy to make a plastic bottle from recycled plastic as from new materials.

Metal and glass packaging can be recycled endlessly, without loss of quality. Imagine how much energy you could save!



 **recycle**
for County Durham

03000 26 00 00

www.durham.gov.uk/recycling

wasteaware@durham.gov.uk

 **Recycle for County Durham**

