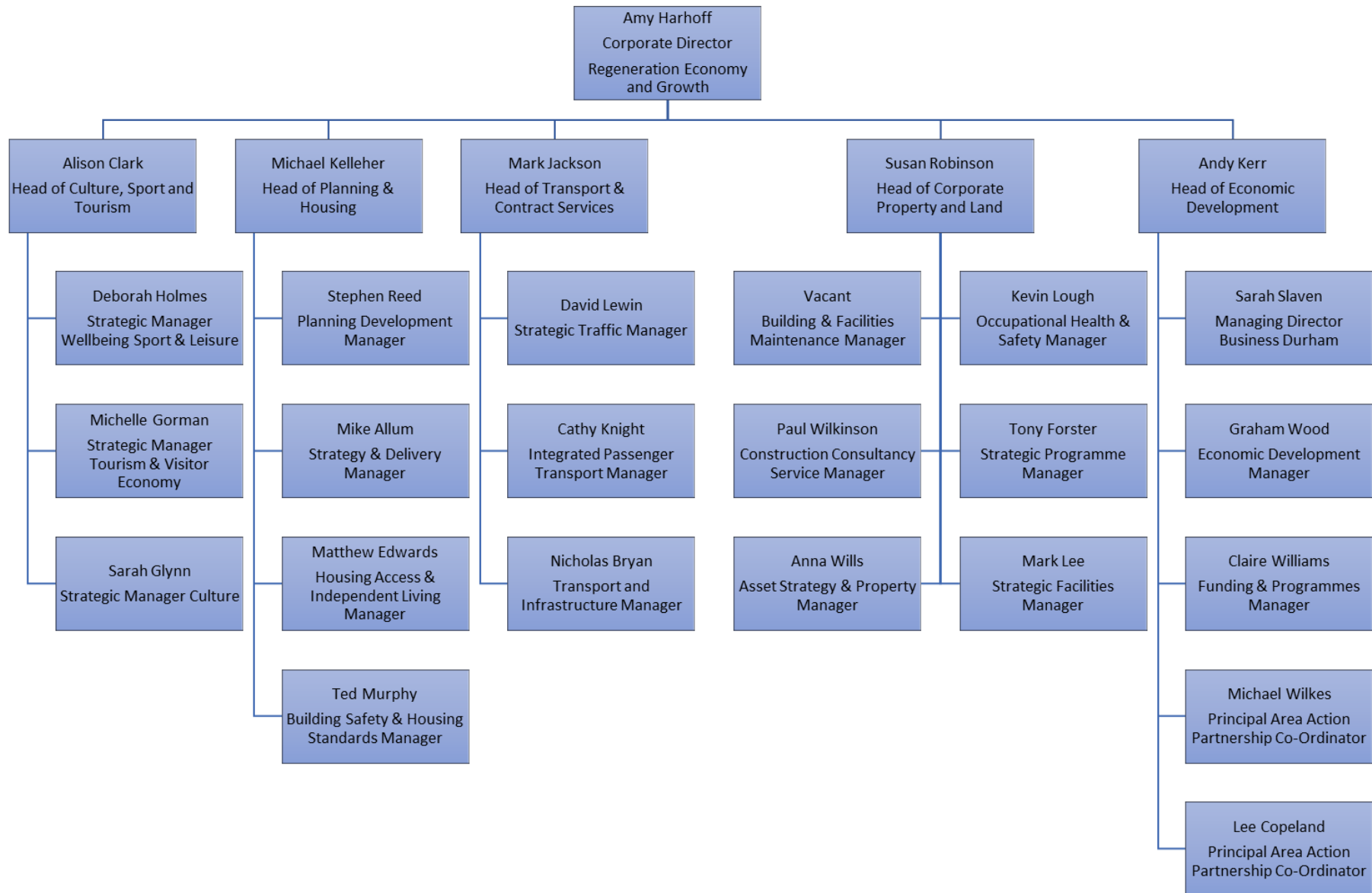


# Regeneration Economy and Growth Structure



## Text version of Regeneration Economy and Growth Structure

- Amy Harhoff - Corporate Director Regeneration, Economy and Growth
  - Alison Clark, Head of Culture, Sport and Tourism
    - Deborah Holmes, Strategic Manager Wellbeing Sport & Leisure
    - Michelle Gorman, Strategic Manager Tourism & Visitor Economy
    - Sarah Glynn, Strategic Manager Culture
  - Michael Kelleher, Head of Planning and Housing
    - Stephen Reed, Planning Development Manager
    - Mike Allum, Strategy & Delivery Manager
    - Matthew Edwards, Housing Access & Independent Living Manager
    - Ted Murphy, Building Safety & Housing Standards Manager
  - Mark Jackson, Head of Transport and Contract Services
    - David Lewin, Strategic Traffic Manager
    - Cathy Knight, Integrated Passenger Transport Manager
    - Nicholas Bryan, Transport and Infrastructure Manager
  - Susan Robinson, Head of Corporate Property and Land
    - Vacant, Building & Facilities Maintenance Manager
    - Kevin Lough, Occupational Health & Safety Manager
    - Paul Wilkinson, Construction Consultancy Service Manager
    - Tony Forster, Strategic Programme Manager
    - Anna Wills, Asset Strategy & Property Manager
    - Mark Lee, Strategic Facilities Manager
  - Andy Kerr, Head of Economic Development
    - Sarah Slaven, Managing Director Business Durham
    - Graham Wood, Economic Development Manager
    - Claire Williams, Funding & Programmes Manager
    - Michael Wilkes, Principal Area Action Partnership Co-ordinator
    - Lee Copeland, Principal Area Action Partnership Co-ordinator