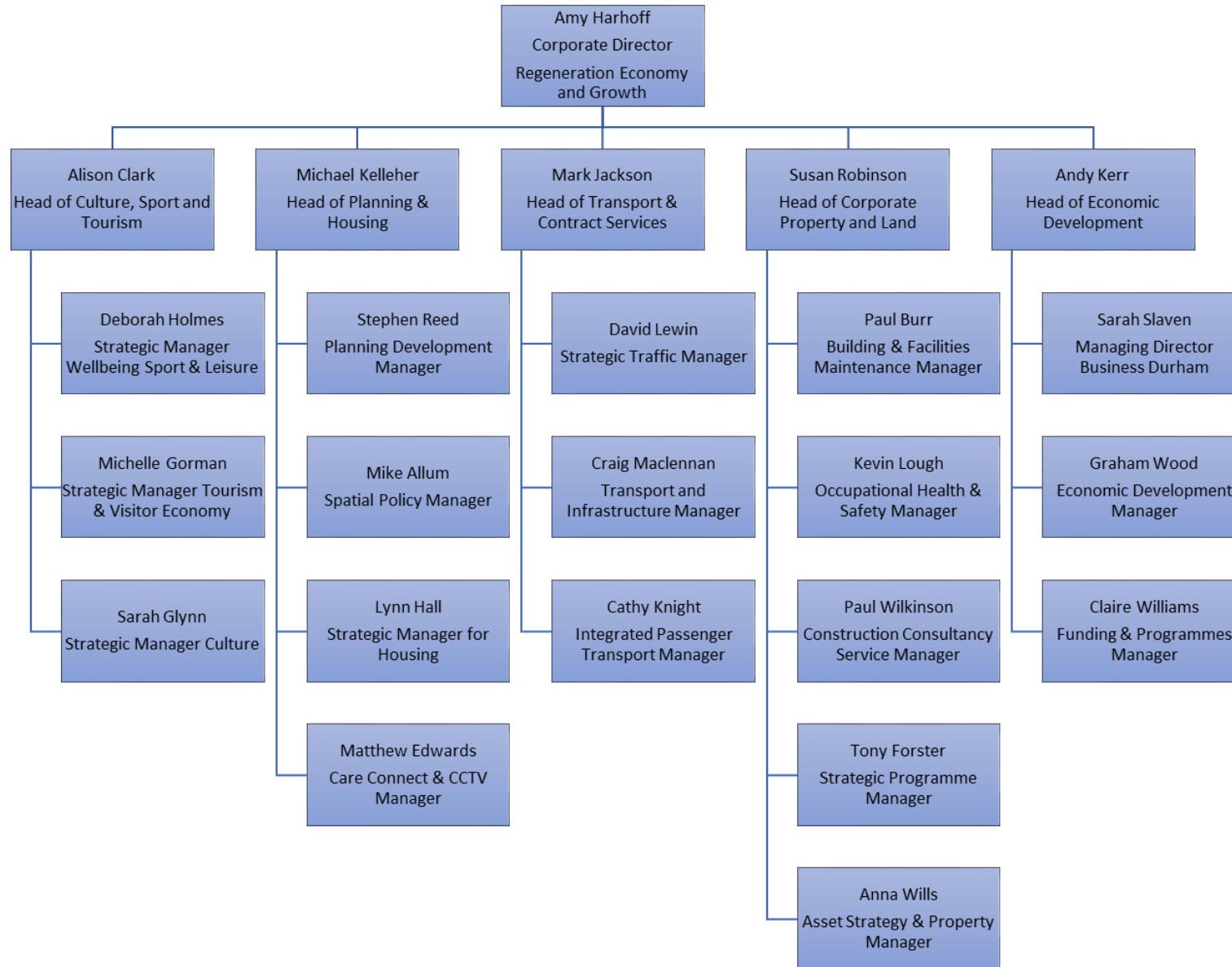


Regeneration Economy and Growth Structure



Text version of Regeneration Economy and Growth Structure

- Amy Harhoff - Corporate Director Regeneration, Economy and Growth
 - Alison Clark, Head of Culture, Sport and Tourism
 - Deborah Holmes, Strategic Manager Wellbeing Sport & Leisure
 - Michelle Gorman, Strategic Manager Tourism & Visitor Economy
 - Sarah Glynn, Strategic Manager Culture
 - Michael Kelleher, Head of Planning and Housing
 - Stephen Reed, Planning Development Manager
 - Mike Allum, Spatial Policy Manager
 - Lynn Hall, Strategic Manager for Housing
 - Matthew Edwards, Care Connect & CCTV Manager
 - Mark Jackson, Head of Transport and Contract Services
 - David Lewin, Strategic Traffic Manager
 - Craig Maclennan, Transport and Infrastructure Manager
 - Cathy Knight, Integrated Passenger Transport Manager
 - Susan Robinson, Head of Corporate Property and Land
 - Paul Burr, Building & Facilities Maintenance Manager
 - Kevin Lough, Occupational Health & Safety Manager
 - Paul Wilkinson, Construction Consultancy Service Manager
 - Tony Forster, Strategic Programme Manager
 - Anna Wills, Asset Strategy & Property Manager
 - Andy Kerr, Head of Economic Development
 - Sarah Slaven, Managing Director Business Durham
 - Graham Wood, Economic Development Manager
 - Claire Williams, Funding & Programmes Manager