

Hedgerow Species Mix



Hedgerow Species Mix

The species mixes given below are based on the composition of hedges found across the County in different landscapes.

Some species have been omitted, either because they usually colonise new hedges rapidly, are difficult to propagate, are not good hedging plants, or in some cases because they aren't commercially available, or there is a danger of cultivated forms being substituted for native varieties.

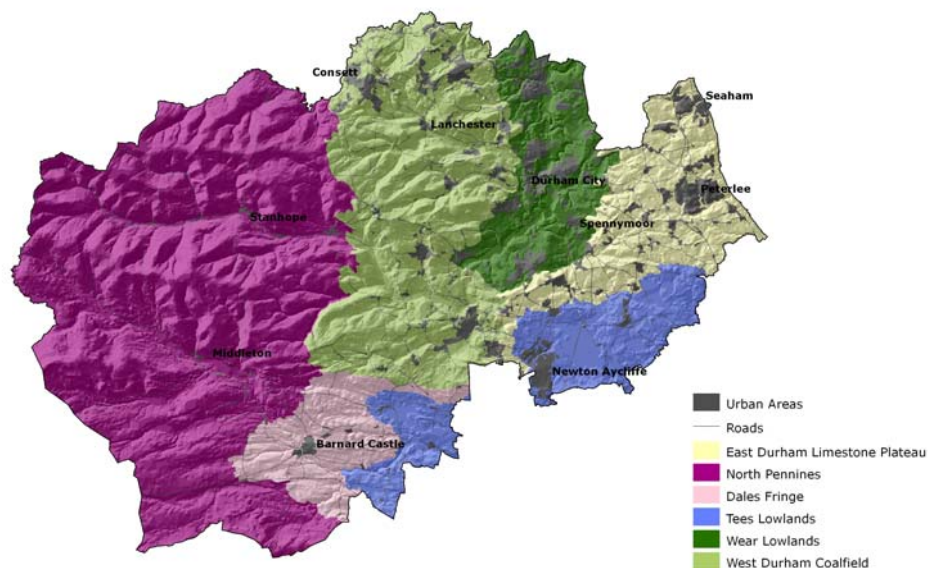
Notes

These species mixes are recommended for hedges planted under the **Field Boundary Restoration Grant** scheme.

Percentage bands indicate the total combined percentage for the species listed.

Hedgerow trees are typically planted at >20m apart.

County Character Areas



Crown Copyright. All rights reserved. Durham County Council LA 100019779 2008

Area	Major species			Minor species
	Percentage	60%	20-25%	10-15%
North Pennines	Hawthorn	Blackthorn	Hazel, Holly	Bird Cherry, Dog Rose, Rowan.
Dales Fringe	Hawthorn	Blackthorn	Hazel, Holly	Bird Cherry, Dog Rose, Rowan, Wild Privet
West Durham Coalfield	Hawthorn	Blackthorn	Hazel, Holly	Crab Apple, Bird Cherry, Guelder Rose, Dog Rose, Rowan, Wild Privet
Wear Lowlands	Hawthorn	Blackthorn	Hazel, Holly	Crab Apple, Guelder Rose, Dog Rose, Wild Privet
East Durham Limestone	Hawthorn	Blackthorn	Hazel	Field Maple, Holly, Crab Apple, Dog Rose, Wild Privet
Tees Lowlands	Hawthorn	Blackthorn	Hazel, Holly, Field Maple	Crab Apple, Guelder Rose, Dog Rose, Wild Privet
	Hedgerow trees : Ash, Common Oak (lowlands), Sessile Oak (uplands)			