

# Health and Wellbeing Board – Big Tent Event



# Icebreaker

Macmillan Public Health Portfolio  
Lead, Durham County Council



# The picture of cancer in County Durham

Public Health Intelligence Specialist,  
Durham County Council



# Macmillan Local Authority Partnership Programme

Social Care Projects Manager,  
Macmillan Cancer Support



# THE CHANGING STORY OF CANCER

WE ARE  
MACMILLAN.  
CANCER SUPPORT

around 240,000 getting cancer for the first time



around 162,000 dying from cancer

1970s:  
Cancer is mostly about dying from cancer



1970



1990

around 340,000 getting cancer for the first time

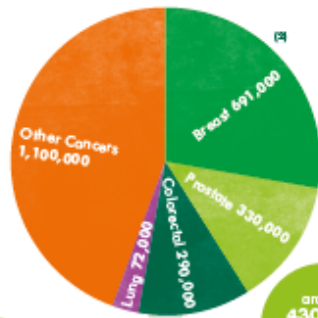


around 94,000 dying from cancer

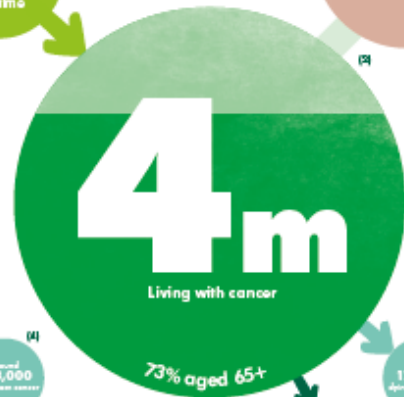
2010 onwards:  
Cancer is increasingly about living with cancer



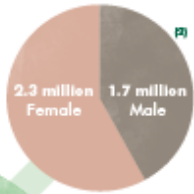
2010



around 430,000 getting cancer for the first time



around 115,000 dying from cancer



2030

# Half of people with cancer may live more than ten years after their diagnosis

Total Prevalence - now



Total Prevalence - 2030



# Surviving cancer does not necessarily mean living well



**3 in 4** people living with cancer are in the survivorship stage<sup>1</sup>



**1 in 4** of them deal with consequences of their treatment<sup>2</sup>



**1 in 5** of cancer survivors may have unmet needs<sup>3</sup>

1. Maher J and McConnell H. New pathways of care for cancer survivors: adding the numbers. Br J Cancer. 2011. 105: S5-S10

2. Macmillan Cancer Support. *Throwing light on the consequences of cancer and its treatment*. 2013. London

3. Armes J et al. Patients' supportive care needs beyond the end of treatment: A prospective, longitudinal survey. Journal of Clinical Oncology. 2009. 27:36 6172-6179

# The type of needs that people have:

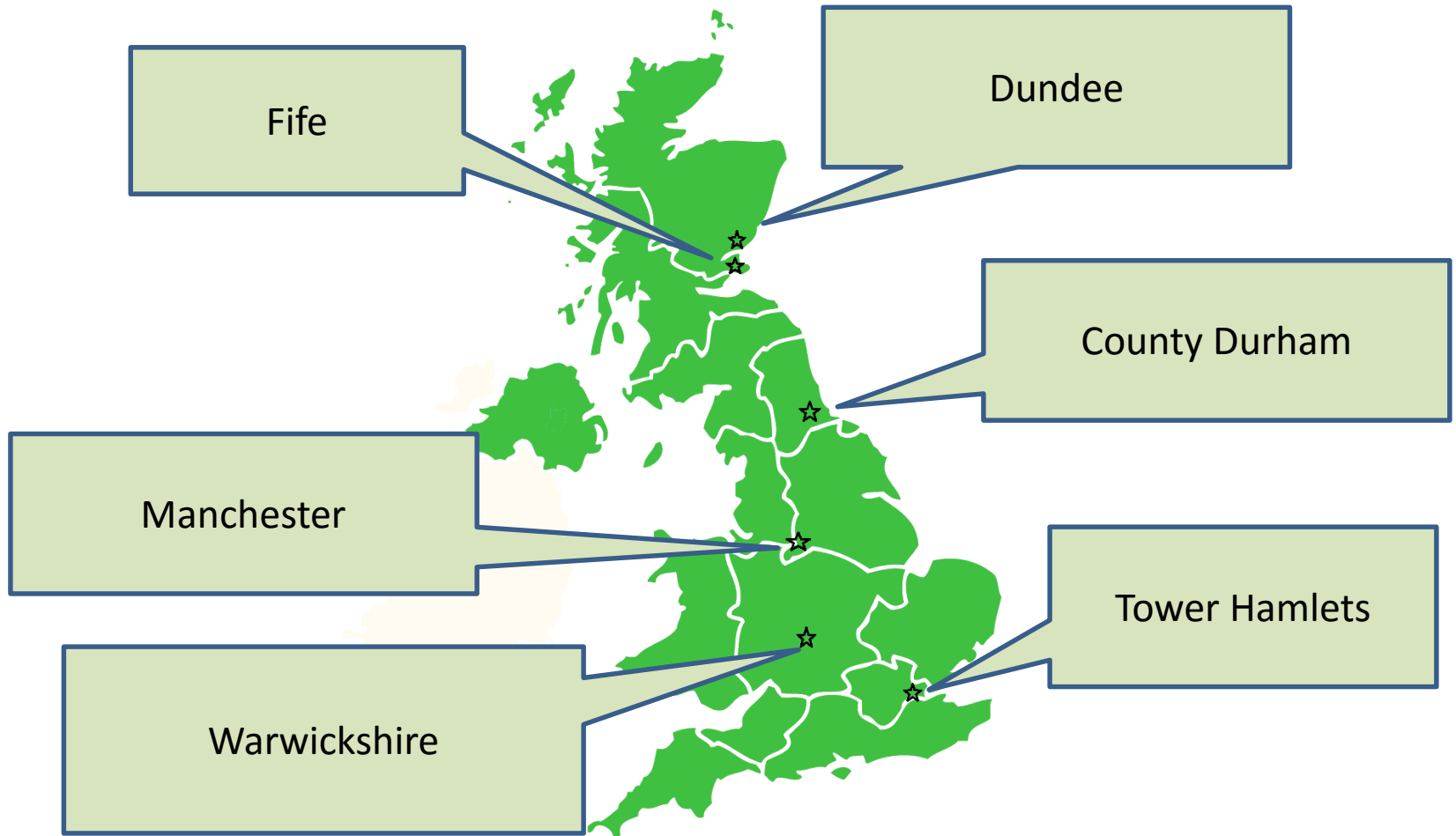
- **Two thirds** of people have practical or personal care needs.
- Almost **half** only get support from informal carers
- **One in ten** people with cancer are constantly or often left housebound due to a lack of support.
- **One in seven** people have had to go to hospital for an unplanned or emergency visit due to a lack of support for their practical or personal needs.
- **Four in five people** with cancer are £570 a month worse off as a result of their diagnosis.
- Issues with **returning to work**, social **isolation**



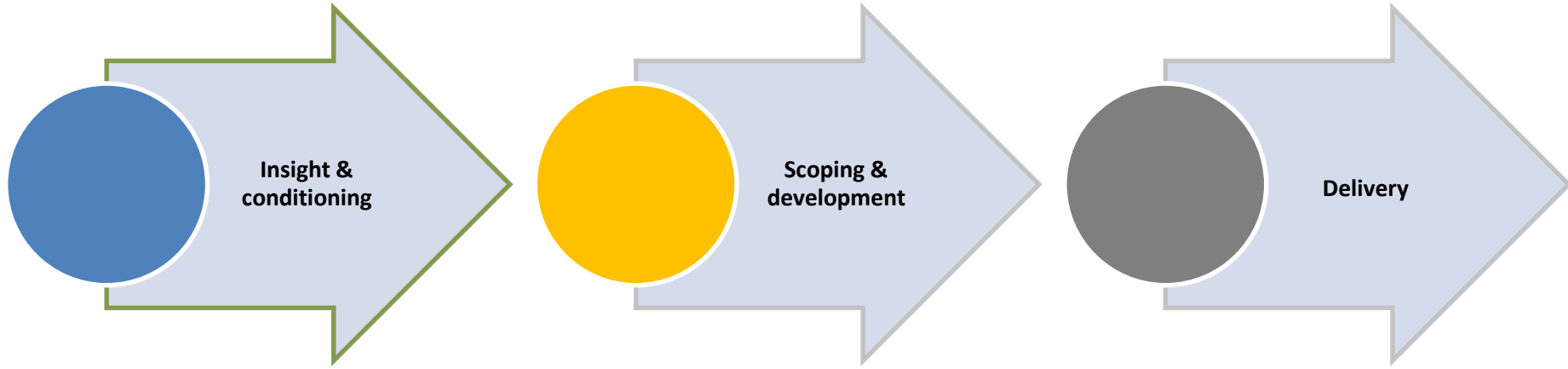
# The principles/outcomes that are being tested:

- Service is **open to everyone**
- Clear **pathways** across health and social care
- **Early intervention** from point of diagnosis
- Holistic **needs assessments** at key points
- **Personalised** care planning
- **Referral** into statutory services and wider community assets
- **Data sharing** across partners
- **Consistent** individual throughout

# The sites across the UK so far:



# Building the conditions....



# My story



# Developing Joining the Dots County Durham

Consultant in Public Health, Durham  
County Council



# Feedback

Macmillan Partnership Quality Lead

