

Child Poverty

Health & Wellbeing “Big Tent Event”

5 October 2016

Head of Policy & Communications

Altogether better



Welcome & Introductions

Altogether better



Introductions

- Name
- Job role/organisation
- “Why I have chosen this workshop?”
- “What does child poverty mean to me?”

Altogether better



Child poverty – the position in the County as we understand

Altogether better



Durham

- Highest rates of unemployment are in the North East
- Economic growth was slower than expected during and after the recession
- Gross disposable household income less than the national average
- Child poverty gap between County Durham and England continues to widen
- Fuel Poverty

Altogether better



Indirect impacts on children in Durham

- **Fuel Poverty**
- **Unemployment**
- **Debt**
- **Family breakdown**
- **Welfare Reform including:**
 - **Benefit cap**
 - **Under occupancy**
 - **Tax credits**

Altogether better



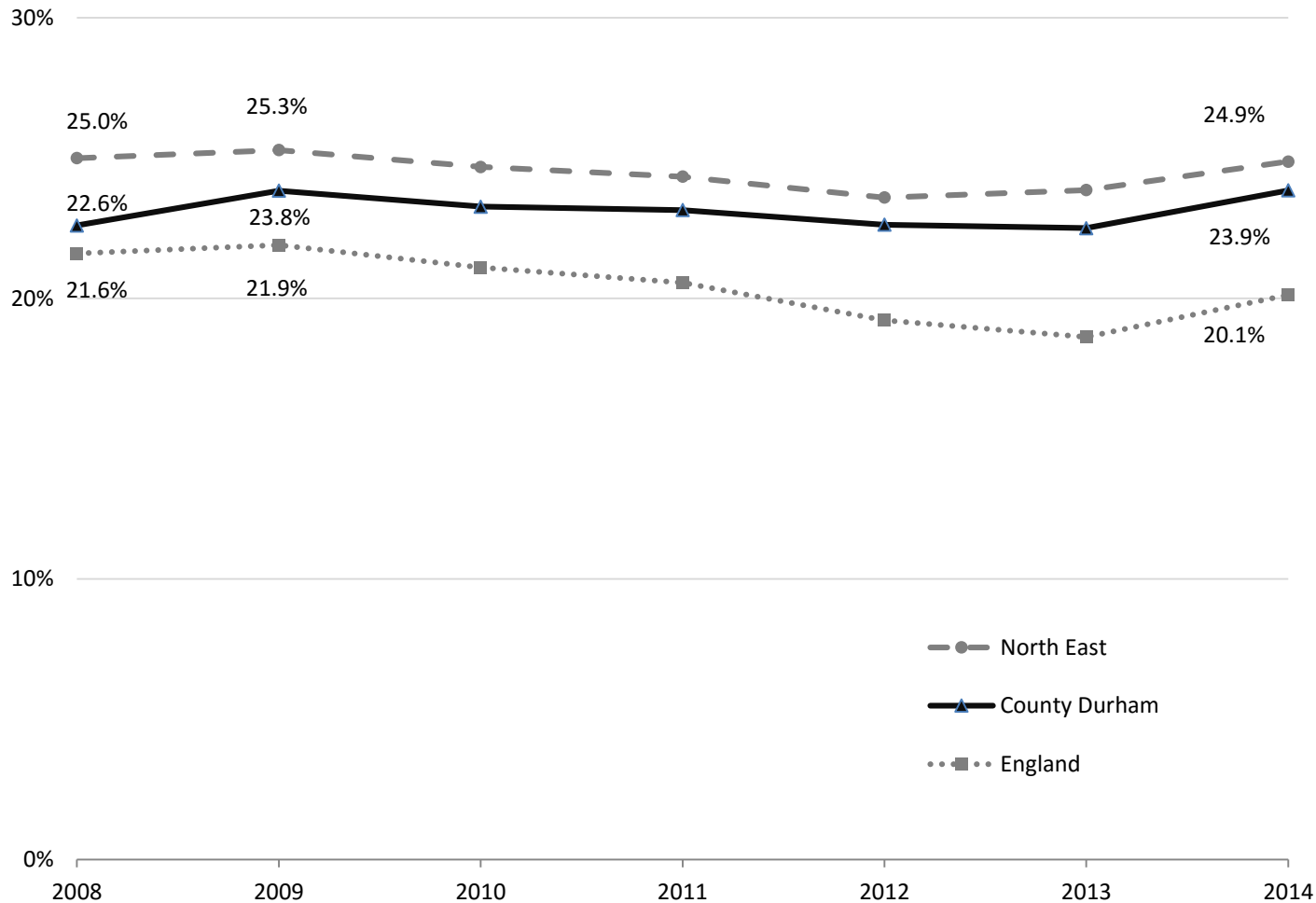
Child Poverty Level

- Existing four measures of income and material deprivation established in 2003
- Proposed new child poverty measure – Amendments to the Welfare Reform and Work Act
 - levels of work within a family
 - improvements in education attainment
- Other indicators which relate to child poverty including:
 - family breakdown
 - debt
 - drug and alcohol dependency
- Removal of duty on local authorities to co-operate to reduce child poverty in their area
- Challenged in the House of Lords – January 2016
- Queens Speech - May 2016
 - The forthcoming Life Chances Strategy will set out this government's new approach to tackling poverty and transforming the life chances of the most disadvantaged children and families. The Strategy will include a set of measures on the root causes of poverty.

Altogether better



Child Poverty in Durham



Source: HMRC -
U16 Children in
Low income
families

Altogether better



Child Poverty in Durham

Sunnybrow

180 children (54.5% child poverty rate). 5.4 percentage point increase since 2008 – 5th highest child poverty rate in the county.

Chester Central 1

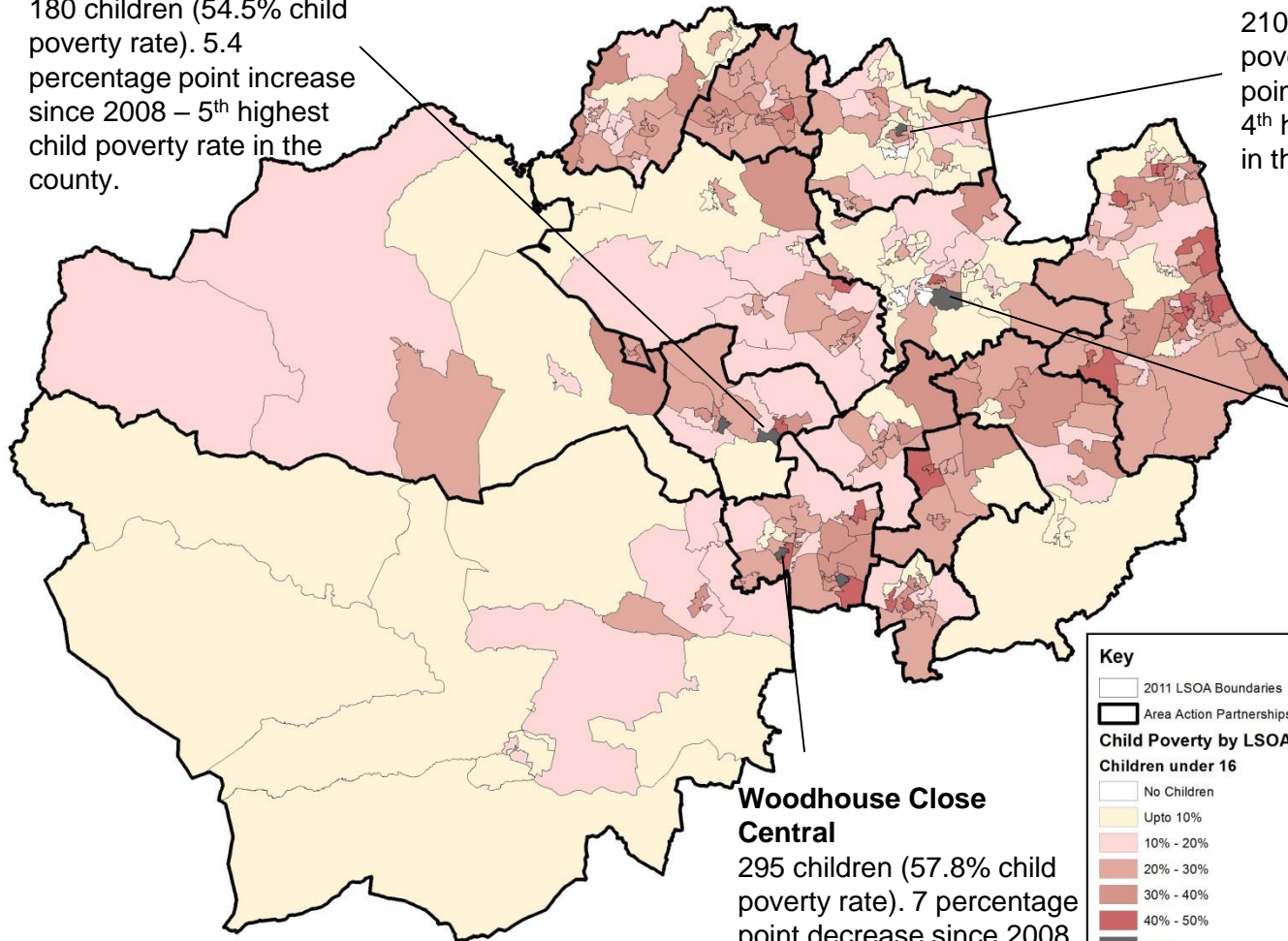
210 children (55.3% child poverty rate). 1 percentage point increase since 2008 – 4th highest child poverty rate in the county.

Sherburn Road

230 children (55.4% child poverty rate). 7.1 percentage point increase since 2008 – 3rd highest child poverty rate in the county (out of 324 areas)

Woodhouse Close Central

295 children (57.8% child poverty rate). 7 percentage point decrease since 2008 – 2nd highest child poverty rate in the county.



Key

- 2011 LSOA Boundaries
- Area Action Partnerships
- Child Poverty by LSOA 2014**
- Children under 16**
- No Children
- Upto 10%
- 10% - 20%
- 20% - 30%
- 30% - 40%
- 40% - 50%
- 50+%

© Crown Copyright and database rights 2016. Ordnance Survey LA 100049055

Source: HMRC - U16 Children in Low income families

Altogether better



Education and Child Poverty

- **Costs of education** - families spend on average £648 per child in primary school, £1,195 per child in secondary school
- **Limits on extra-curricular activities** - parents often need to pay for rewarding and creative activities in schools such as trips or music lessons
- **Quality of education** - children from low-income families are under-represented at the best performing schools
- **Leaving school** - children growing up in poverty are less likely to stay on in education and more likely to leave early without qualifications

From the Child Poverty Action Group 'End the Classroom Divide' Campaign

Altogether better



The direct and indirect impacts of child poverty

Altogether better



Poverty Action Plan – Child Poverty

Altogether better



Council's response

- Established an internal Welfare Reform Steering Group in 2012 in recognition of the wider issues facing residents
- Scope broadened during the last year to include poverty to take a holistic view of issues e.g.
 - Continuing to respond to Welfare Reforms including Universal Credit
 - Financial inclusion
 - Fuel poverty
 - Child poverty
 - Employment
- Focus on preventative work to avoid households getting into financial difficulties
- North East Child Poverty Network

Altogether better



Council's response - Poverty

- Action plan to focus on the actions necessary to respond to the challenges facing the county's residents
- Based on five key themes:
 - Attitudes to poverty and raising its profile
 - Focus on child poverty
 - Credit and debt
 - Further welfare reform and benefit changes
 - Work and personal wellbeing and sense of worth

Altogether better



Child poverty actions include:

- Ensure staff providing frontline services understand poverty and how it affects communities and families within County Durham
- Understand Poverty and how it affects communities and families within County Durham
- Ensure that poverty does not prevent young people from achieving their potential
- Promote financial awareness in young people

Altogether better



AAP projects

- East Durham AAP - Holiday Activity Fund Addressing Holiday Hunger
- Mid Durham AAP – Schools Financial Education Pilot
- East Durham Rural Corridor, Spennymoor and Great Aycliffe and Middridge Partnership AAPs – Financial awareness and credit union promotion
- Durham, Spennymoor, Chester-le-Street, AAP - Mobile Cinema Projects

Altogether better



Swot/Gap analysis

Altogether better



Feedback

Altogether better



Are suggestions....

- Achievable in the short term?
- Achievable in the longer term?
- Requiring investigation and further scoping?
- Unrealistic?

Altogether better